



# Le ST-MICHEL

## contemporary apartments

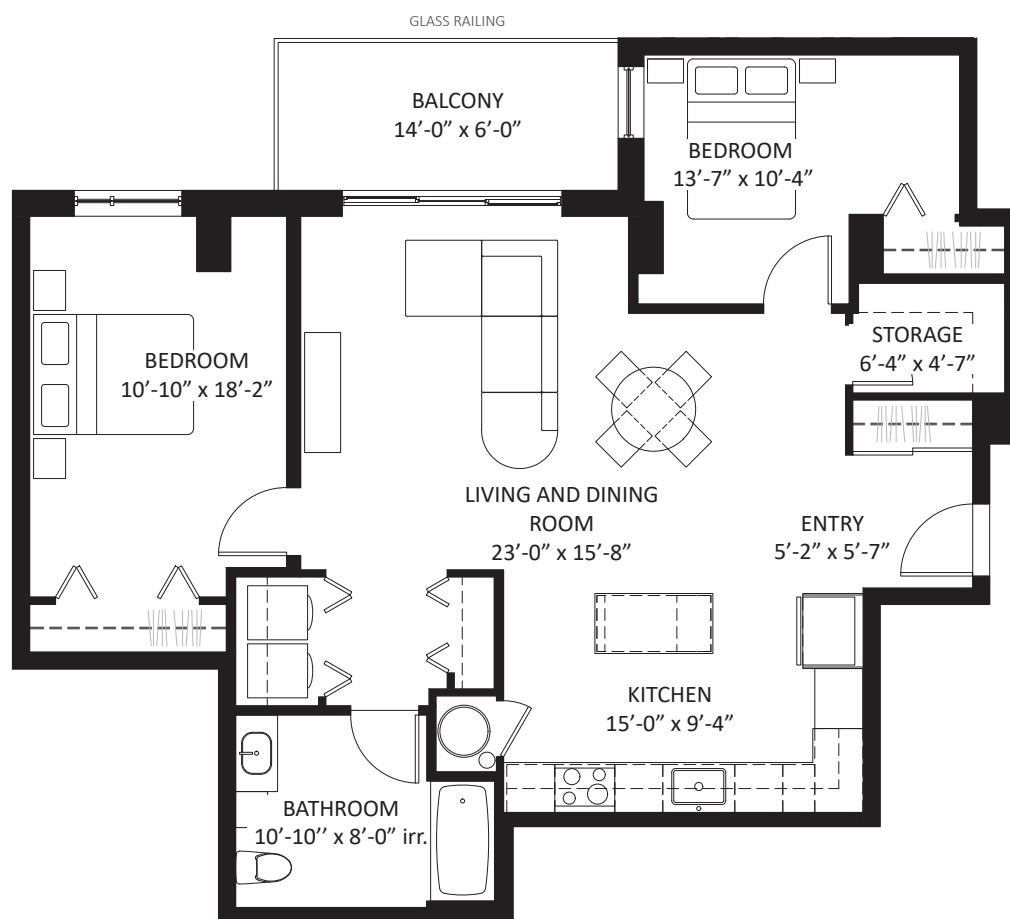
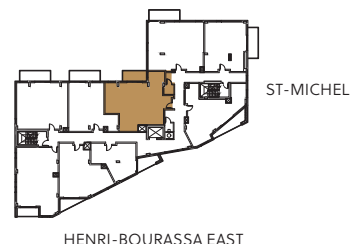
3250, HENRI-BOURASSA EAST, MONTRÉAL-NORTH

### + UNIT TYPE **B6**

2 BEDROOMS

MONTHLY RENT FROM  
2 212\$

+/-1073 sqft + balcony 84 sqft  
FLOORS: 2, 4, 5  
UNITS: 204 / 404 / 504  
ADAPTABLE APARTMENT



Les Immeubles Almigra 2 Inc.  
Almigra Real Estate 2 Inc.

438-375-4329

info@lesaintmichel.ca  
www.lesaintmichel.ca

THE DEVELOPER RESERVES THE RIGHT TO MAKE ANY MODIFICATIONS THEY DEEM NECESSARY. DIMENSIONS AND AREAS MAY VARY FROM THOSE SHOWN. LINEAR DIMENSIONS SHOWN ARE CALCULATED FROM INTERIOR WALL TO INTERIOR WALL. AREAS SHOWN ARE CALCULATED FROM THE OUTSIDE FACE OF EXTERIOR WALLS, TO THE CENTER OF PARTY WALLS AND TO THE INTERIOR FACE OF CORRIDOR WALLS. RENT IS NOT CALCULATED ON THE BASIS OF SQUARE FOOTAGE.